



Fotolaminate

**MFR : COMPLETE COLD
LAMINATION PRODUCTS**



Contact

 **OFFICE ADDRESS :** SHOP NO. 3, SUMAN MARKET, 1st FLOOR,
ESPLANADE ROAD, CHANDNI CHOWK DELHI PIN – 110006.

 **WORKSHOP ADDRESS :** KH. NO.87-570/2 MAIDAN GARHI NEAR
IGNOU UNIVERSITY, SOUTH DELHI PIN – 110068.

 +91-9873184816, 9873684816

 codalam@yahoo.co.in  www.fotolaminate.com



RAJEEV VIG
MANAGING DIRECTOR

Dear Customer, Greetings & best wishes !!!

The Managing Director of Fotolaminate, operating under the brand name Codalam, is a firm believer in the philosophy of "Dream Big." A pioneer in the field, he is widely recognized and globally connected within the manufacturing industry of Cold Lamination Machines, Karizma & Canvera Album Making Machines, Photo Framing Machines, Hot & Cold Gluing Machines, V Grooving Machines, Thermal Lamination Machines, UV Coating Machines, & All Allied Raw Materials.

His vision is to transform India's industry from an unorganized sector into a structured, mechanized, and skilled ecosystem.

Rajeev Vig is a true leader driving excellence within his company while shaping the industry as a whole.

First and foremost, we would like to thank you for your continued patronage and unwavering support over the years. We are delighted to welcome you to our exclusive club of high quality cold lamination machines & distributors.

With your support and the sincere efforts of our employees across India, we have emerged as one of the most progressive and reliable brands in the Indian cold lamination machines industry. We remain committed to providing high-quality products at the most competitive prices, along with a wide range tailored to meet your requirements.

To better serve you, we have established our own stock points across the country in key locations including Delhi, Mumbai, Bangalore, Kolkata, Kerala, and Pune.

We have also introduced a new range of lamination products and machines designed to complement the framing business and create added value for our customers.

As part of our product development initiatives, we continuously introduce new products in line with industry requirements. Details of these products will be communicated to you by our sales personnel, dealers, and distributors. The same will also be shared through our supplementary catalogs.

We hold our relationship in high regard and sincerely appreciate your business. Please rest assured that we will ensure a consistent and reliable supply of all items listed in our catalogue as and when you place your orders.

"Best Quality... Lowest Prices," is not just our motto it is our commitment to our customers.

*Thanks once again,
Yours faithfully,*

RAJEEV VIG
MANAGING DIRECTOR
FOTOLAMINATE

About Us Our Bussiness

Established in 1820, M/S MELA RAM & SONS is a famous name as a leader in photographers and photo goods suppliers. Our forefathers started their career in Peshawar Cantt (currently a part of Pakistan) and soon spread the name all over India covering major cities like Delhi , Mumbai, Lucknow , Masoori , Barielly , Dehradoun to name a few.

In 1981, Fotomatics was a name coined for the division of the colour photo printing lab making Mela Ram & Sons legends in the industry. FOTOMATICS was the first semi automated Color Lab in India, ever since then we have been providing services to professional photographers all across India especially in Delhi.

In 1986, as we progressed from photograph printing to photo lamination industry thus the name from Fotomatics to Fotolaminate came to existence, specializing in photofinishing equipments and its allied materials especially Cold Lamination Product line.

In North India, we are the first manufacturers and suppliers, for all types of lamination, Album making and finishing products. We are a team of young and experienced professionals with Research and Development capabilities. We can develop machines with the customized needs of our client.

Currently, we have four branches in Delhi & Mumbai and already served more than 60,000 satisfied customers in India, and across UAE , eastern countries of the globe.

Clients are our main asset and surpassing their expectations is the main objective of our firm. Therefore, we provide them with quality products and offer reliable services. Moreover, we deliver our products on-time and offer various payment options to the clients.

We also collect feedback from the clients, which helps us modify our working procedures as per their changing needs. Further, our business dealings are based on fair & transparent policies, which provide maximum benefit to the clients.

- * High Strength
- * High Load Carrying Capability
- * Excellent Finishing
- * Good Customer Support



Awards



Awards Certificates



Certificates



COLD LAMINATION MACHINE

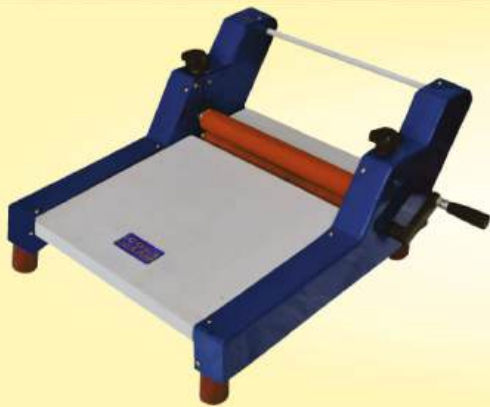


Size 13 Inch
CL130 Manual (Professional Model)
Cold Lamination Machine
13" x 2" Ø Rubber Roller
Both Side Pressure with Manual System.

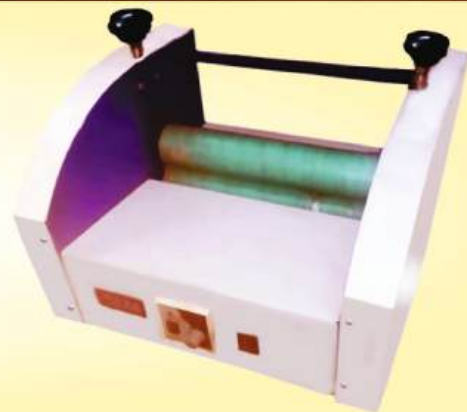
Size 13 inch
CL130 Manual (New Model)
Cold Lamination Machine
13" x 2" Ø Rubber Roller
Both Side Pressure with Manual System



Size 13 Inch
CL130 Manual (Economy Model)
Cold Lamination Machine
13" x 2" Ø Rubber Roller
Both Side Pressure with Manual System.



Size 13 Inch
CL130 Auto (Semi Auto)
Cold Lamination Machine
13" x 2" Ø Rubber Roller
Both Side Pressure, Fix Speed Motor
Roll Hanging Winding/Unwinding System.



COLD LAMINATION MACHINE



Size 13 Inch
CL130 Auto (Fully Auto)
Cold Lamination Machine
13" x 2" Ø Rubber Roller
UP/DOWN Roller Auto with Pnumatic System
Variable Speed Motor Control System Roll Hanging
Winding / Unwinding System with Stand.

Size 22 Inch
CL220 Manual (New Model)
Cold Lamination Machine
22" x 3" Ø Rubber Roller
Both Side Pressure with Manual System.



Size 22 Inch
CL220 Manual (Professional Model)
Cold Lamination Machine
22" x 3" Ø Rubber Roller
Both Side Pressure with Manual System.

Size 22 Inch
CL220 Auto (Semi Auto)
Cold Lamination Machine
22" x 3" Ø Rubber Roller
Both Side Pressure, Variable Speed Motor
Roll Hanging Winding / Unwinding System with Stand.



COLD LAMINATION MACHINE



Size 22 Inch
CL220 Auto (Fully Auto)
Cold Lamination Machine
22" x 3" Ø Rubber Roller
UP/DOWN Roller Auto with Pnumatic System.
Variable Speed Motor Control System
Roll Hanging Winding / Unwinding System with Stand.

Size 26 Inch
CI260 Manual (professional Model)
Cold Lamination Machine
26" X 3" Ø Rubber Roller
Both Side Pressure
With Manual System.



Size 26 Inch
CL260 Auto (Semi Auto)
Cold Lamination Machine
26" x 3" Ø Rubber Roller
Both Side Pressure
Variable Speed Motor Control System
Roll Hanging Winding / Unwinding System with Stand.

Size 26 Inch
CL260 Auto (Fully Auto)
Cold Lamination Machine
26" x 3" Ø Rubber Roller
UP/Down Roller Auto With Pnumatic System
Variable Speed Motor Control System.
Roll Hanging Unit Winding/ Unwinding System with Stand



COLD LAMINATION MACHINE



Size 32 Inch
CL320 Manual (Professional Model)
Cold Lamination Machine
32" x 4" Ø Rubber Roller
Both Side Pressure with Manual System.

Size 32 Inch
CL320 Auto (Semi Auto)
Cold Lamination Machine
32" x 4" Ø Rubber Roller
Both Side Pressure, Variable Speed Motor
Roll Hanging Winding / Unwinding System with Stand.



Size 32 Inch
CL320 Auto (Fully Auto)
Cold Lamination Machine
32" x 4" Ø Rubber Roller
UP/DOWN Roller Auto with Pnumatic System.
Variable Speed Motor Control System
Roll Hanging Winding / Unwinding System with Stand.



Size 42 Inch
CL420 Manual (Professional Model)
Cold Lamination Machine
42" x 5" Rubber Roller
Both Side Pressure with Manual System.



COLD LAMINATION MACHINE

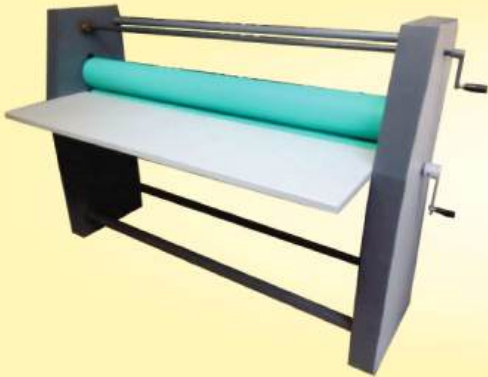


Size 42 Inch
CL420 Auto (Semi Auto)
Cold Lamination Machine
42" x 5" Ø Rubber Roller
Both Side Pressure Variable Speed Motor
Control System Roll Hanging Winding /
Unwinding System with Stand.

Size 42 Inch
CL420 Auto (Fully Auto)
Cold Lamination Machine
42" x 5" Ø Rubber Roller
UP/DOWN Roller Auto with Pnumatic System Variable
Speed Motor Control System Roll Hanging Winding /
Unwinding System with Stand.



Size 52 Inch
CL520 Manual (Professional Model)
Cold Lamination Machine
52" x 6" Ø Rubber Roller
Both Side Pressure with Manual System.



Size 52 Inch
CL520 Auto (Semi Auto)
Cold Lamination Machine
52" x 6" Ø Rubber Roller
Both Side Pressure, Variable Speed Motor
Roll Hanging Winding / Unwinding System with
Stand.



COLD LAMINATION MACHINE



Size 52 Inch
CL520 Auto (Fully Auto)
Cold Lamination Machine
52" x 6" Ø Rubber Roller
UP/DOWN Roller Auto with Pnumatic System.
Variable Speed Motor Control System
Roll Hanging Winding / Unwinding System with Stand.



Size 62 Inch
CL620 Manual (Professional Model)
Cold Lamination Machine
62" x 6" Rubber Roller
Both Side Pressure with Manual System.



Size 62 Inch
CL620 Auto (Semi Auto)
Cold Lamination Machine
62" x 6" Ø Rubber Roller
Both Side Pressure
Variable Speed Motor Control System
Roll Hanging Winding / Unwinding System with Stand.

Size 62 Inch
CL620 Auto (Fully Auto)
Cold Lamination Machine
62" x 6" Ø Rubber Roller
UP/DOWN Roller Auto with Pnumatic
System Variable Speed Motor Control
System Roll Hanging Winding / Unwinding
System with Stand.



FLATBED LAMINATER MACHINE

Size 32 Inch

Flatbed Roller Lamination Machine
32" Retro - Reflective Signage, Bidder & the Requisite, Good Quality Upper Rubber Roller 4" Dya, 3' X 8' Table Size, Auto UP / Down Roller, Auto Air Pressure Adjustment Unit, Film Roll Hanging Winding / Unwinding Attachment System, Forward / Reverse with Manual Sliding Cnc Rail, Pnumatic Cylinder Auto System, (0-40 mm) Roller opening, Silent Compressor, Toughend Glass for End User.



Size 62 Inch

Flatbed Roller Lamination Machine
62" Retro - Reflective Signage, Bidder & the Requisite, Good Quality Upper Rubber Roller 6" Dya, 5' X 10' Table Size, Auto UP / Down Roller, Auto Air Pressure Adjustment Unit, Film Roll Hanging Winding / Unwinding Attachment System, Forward / Reverse with Manual Sliding Cnc Rail, Pnumatic Cylinder Auto System, (0-40 mm) Roller opening, Silent Compressor, Toughend Glass for End User.



Canvera Album Making Machine



Size 12.5 Inch

Thermal Lamination Machine

The 12.5 Inch Thermal Lamination Machine is a compact, efficient machine designed for laminating paper, documents, photos, and ID cards with high-quality thermal films. It is ideal for small offices, photo studios, educational institutions, and document preservation needs. This machine offers simple operation, fast lamination, and consistent performance, with built-in temperature and speed controls. Its durable rollers and heating elements ensure bubble-free lamination, enhancing the professional look of laminated materials.

Size 14 Inch

Thermal Lamination Machine

The 14 Inch Thermal Lamination Machine with Stand is a professional-grade machine designed for efficient and high-quality thermal lamination of documents, photographs, ID cards, posters, and other media. The inclusion of a sturdy stand provides ergonomic operation and stability during extended use, making it ideal for photo studios, printing shops, and offices with frequent lamination needs. Equipped with adjustable temperature and speed controls, this machine ensures perfect lamination results for various material thicknesses. The heated steel and rubber rollers guarantee smooth, bubble-free lamination and a professional finish.



Size 14 Inch

Thermal Lamination Machine

This model is with high capacity rolls feeder. 13" can take rolls up to 500 meters and you can do 1 side or 2 side thermal lamination. With table top design the speed offered is up to 5 meters per minute Advanced features ensures high productivity, ease of operations and high quality output. The spares of the machine is covered under warranty for a period of 6 months from the date of Invoice against any manufacturing defect.



Canvera Album Making Machine



Size 20 Inch

Thermal Lamination Machine

The 20 Inch Thermal Lamination Machine With Stand Is A Robust And Professional Machine Designed For High-volume Lamination Of Documents, Posters, Photographs, Id Cards, And Large Format Sheets. Built With A Strong Steel Frame And Industrial-grade Rollers, This Machine Provides Reliable And Efficient Lamination For Commercial And Industrial Applications. It Features Adjustable Temperature And Speed Control Settings To Accommodate Various Media Thicknesses And Types. The Heated Rollers Ensure Even, Bubble-free Lamination, Delivering A Consistently Smooth And Durable Finish. The Ergonomic Stand Design Offers Stability And Convenient Operation, Making It Ideal For High-usage Environments Such As Printing Shops, Photo Studios, And Educational

Size 26 Inch

Thermal Lamination Machine

The 26 Inch Thermal Lamination Machine With Stand Is A Heavy-duty And Professional-grade Machine Designed For High-volume Lamination Of Documents, Posters, Photographs, Id Cards, And Large-format Sheets. It Is Perfect For Photo Studios, Printing Shops, Educational Institutes, And Offices Requiring Consistent And High-quality Lamination Work. Equipped With Adjustable Temperature And Speed Control Settings, The Machine Provides Optimal Performance For Various Material Types And Thicknesses. The Heated Rollers Ensure Smooth, Bubble-free Lamination, While The Robust Stand Provides Ergonomic Operation And Stability During



Size 20 Inch

Window Dye Cutter

The 20 Inch Window Dye Cutter is a specialized machine designed for precise dye cutting of window profiles, photo frames, and laminated sheets. It offers high accuracy and clean cutting performance, making it ideal for photo framing shops, signage industries, and packaging production units. Built with a robust Mild Steel (MS) frame and equipped with high-precision dye cutting mechanisms, this machine ensures consistent and reliable cuts every time. It is particularly suitable for cutting customized shapes and profiles used in display and window applications.



Canvera Album Making Machine

Size 20 Inch

V Window Dye Cutter

The 20 Inch V Window Dye Cutter Is A Specialized Machine Designed For Precise V-shaped Cutting Of Window Profiles, Photo Frames, And Laminated Boards. It Is Widely Used In Photo Framing Shops, Signage Production, Packaging Industries, And Printing Units Where Accurate Angled Cuts Are Essential. Constructed With A Heavy-duty Mild Steel (ms) Frame, This Machine Ensures Durability And Consistent Performance. The Sharp V-shaped Cutting Dies Enable Clean And Accurate Cuts, Suitable For Producing Custom Window Shapes In Photo Albums And Display Frames.



Size 20 Inch

Window Dye Cutter with Whole Punch & Stapler Table

The 20 Inch Window Dye Cutter With Whole Punch & Stapler Table Is A Comprehensive Solution For Precise Cutting, Punching, And Stapling Of Photo Frames, Document Holders, And Packaging Windows. This Machine Combines The Functionality Of A Dye Cutter, Whole Punch, And Stapler In One Robust Unit, Making It Ideal For Photo Studios, Printing Shops, And Packaging Manufacturers. Constructed With A Heavy-duty Mild Steel (ms) Frame, It Provides Consistent Precision And Durability. The Machine Offers High-accuracy Cutting And Punching, While The Stapler Table Enables Easy Binding Of Laminated Or Framed Sheets.



Size 20 Inch

Album Cutter With Stand

The Album Cutter With Stand Is A Robust And Precise Manual Rim Cutter Designed For Heavy-duty Cutting Tasks. Equipped With A Strong Stainless Steel Blade, It Can Cut Through Up To 500 Sheets Of Paper At Once. Built With High-quality Imported Materials, It Ensures Durability And Accurate Cutting. The 19-inch Cutting Width Easily Handles 400-500 Sheets Of 80 Gsm Paper With 100% Precision.



KARIZMA ALBUM MAKING MACHINES



Size 14 Inch
UV Coating Machine

The 14 Inch Uv Coating With Ir Lamination Machine Is A Professional-grade Machine Designed For Applying Uv Varnish Coatings And Ir (infrared) Lamination To Various Surfaces Such As Paper, Posters, Boards, Metal Sheets, Plastic Profiles, Wood, Bamboo, And Glass. This Versatile Machine Is Perfect For Photo Studios, Printing Shops, Advertising Agencies, And Industrial Applications That Require High-quality Surface Finishing. Equipped With A Variable Speed Dc Frequency Drive Motor, It Ensures Smooth And Consistent Coating And Lamination. The System Includes A Uv Conveyor Belt, Compatible Rubber Rollers For Coating, Noiseless Operation, And An Air Knife For Even Application. It Provides A Durable, High-gloss Finish While Protecting Printed Materials From Wear And Fading.

Size 20 Inch
UV Coating Machine

The 20 Inch Uv Coating With Ir Lamination Machine Is A High-performance Professional Machine Designed For Applying Uv Varnish And Ir Lamination To A Wide Variety Of Surfaces. Ideal For Photo Studios, Printing Shops, And Industrial Production Environments, It Provides Superior Surface Finishing For Materials Such As Paper, Posters, Boards, Metal, Plastic Profiles, Wood, Bamboo, And Glass. This Machine Features A Dc Frequency Drive Motor With Variable Speed Control, Ensuring Consistent Application Of Uv Coating Without Bubbles Or Streaks. The System Is Equipped With A Uv Conveyor Belt, Compatible Rubber Rollers, Noiseless Operation, And An Air Knife For Even Distribution Of The Varnish And Lamination Layer. It Guarantees A Professional High-gloss Finish That Enhances Durability And Appearance Of Printed Products.



Size 20 Inch
UV Dryer Machine

The 20 Inch Uv Dryer Machine Is Designed For Fast And Efficient Drying Of Uv-coated Materials, Providing A Professional Finish For Laminated Sheets, Posters, Photos, And Other Printed Products. Ideal For Photo Studios, Printing Shops, And Industrial Production Environments, This Machine Ensures Quick Curing Of Uv Varnish, Enhancing Durability And Surface Gloss. Equipped With Powerful Uv Lamps And A Variable Speed Conveyor Belt, The Machine Offers Uniform Drying While Minimizing The Risk Of Overheating Or Uneven Curing. Its Robust Mild Steel (ms) Body Construction Ensures Long-lasting Performance And Stable Operation Under Continuous Use.



Size 20 INCH ALL IN ONE CREASING,
HOT ALLIGNER, HOT & COLD PRESS

The All in One Creasing, Cold & Hot Press, Hot Aligner Machine is a highly versatile and efficient multi-functional solution designed for photo album production, bookbinding, and document finishing industries. It combines essential operations in a single machine: creasing, cold finishing, hot pressing, and hot aligning, providing convenience and precision in one unit. This machine is perfect for photo studios, printing shops, packaging industries, and other production units where precise creasing, lamination, and alignment are necessary. Its robust construction with a heavy-duty frame ensures stable and reliable performance, while advanced control systems allow for consistent and high-quality processing.



KARIZMA ALBUM MAKING MACHINES



Size 20 INCH ALL IN 1 CREASING, HOT ALLIGNER, HOT & COLD PRESS

Four in One Creasing, Cold & Hot Press, Hot Aligner Machine is a multi-functional professional device designed for photo album production, bookbinding, and document finishing applications. It integrates four essential functions: creasing, cold finishing, hot finishing, and heating flattening, along with cold flattening, air pump system, book pressing, and cover processing. This machine provides efficient processing for photo studios, printing shops, and packaging industries requiring high precision and versatility. Its robust construction ensures stable operation, while the ergonomic design makes it easy to handle large volumes of material with consistent quality.

Size 14 Inch Hot Glueing Machine

The 14 Inch Hot Glueing Machine is a heavy-duty industrial machine designed for efficient and precise hot melt adhesive application. It is suitable for a wide range of materials, including papers, boards, plastics, and other surfaces used in photo albums, packaging, and binding industries. This machine features a heated adhesive tank, heated rollers, and a DC drive with variable speed control system. The manual pressure adjustment ensures compatibility with different types of materials, allowing uniform and strong bonding. It is widely used in photo studios, printing shops, packaging industries, and manufacturing units for high-volume production with consistent



Size 16x20 Inch Cold Press

The Cold Press Manual Machine is a robust and reliable solution designed for precise cold pressing of photo albums, documents, boards, and other materials. It is ideal for applications where controlled pressure is required for finishing, flattening, or assembling laminated products. This machine features a strong manual operating system with a stable MS body construction, allowing users to apply consistent pressure manually. It is widely used in photo studios, printing shops, and binding industries, ensuring smooth and durable pressing results.

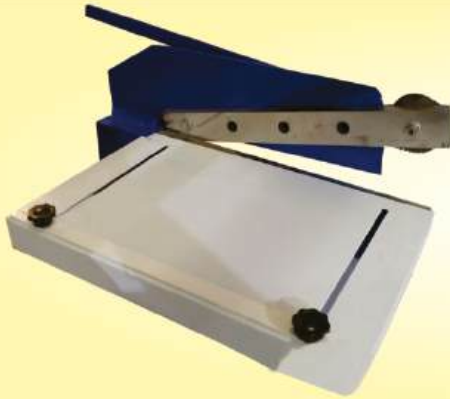


20 INCH ALBUM CUTTER WITH STAND MANUAL

The 20 Inch Album Cutter with Stand is a professional-grade cutting machine designed for precise cutting of photo album sheets, paper, and board materials. It offers high accuracy and efficiency in cutting, making it ideal for high-volume production in photo studios, printing shops, and binding industries. This machine features a robust frame with a stable stand and a heavy-duty rotary blade system, capable of cutting up to 500 sheets at a time. The high-quality imported stainless steel (SS) blade ensures sharpness and longevity, while the precise alignment mechanism guarantees consistent cutting accuracy.



Cutting Machines



Size 3mm MDF Board Cutter

The 3mm Mdf Board Cutter Is A Reliable And Sturdy Machine Designed For Precise Cutting Of Mdf Sheets, Hardboards, Sunboards, And Foam Boards Up To 3mm Thickness. Built For Durability And Accuracy, This Manually Operated Cutter Ensures Smooth And Straight Edges With Minimal Effort. Its Ergonomic Design And Robust Blade Mechanism Make It Ideal For Workshops, Signage Industries, Packaging Units, And Display Board Manufacturers. Compact Yet Efficient, This Machine Provides Consistent Performance And Long Service Life.

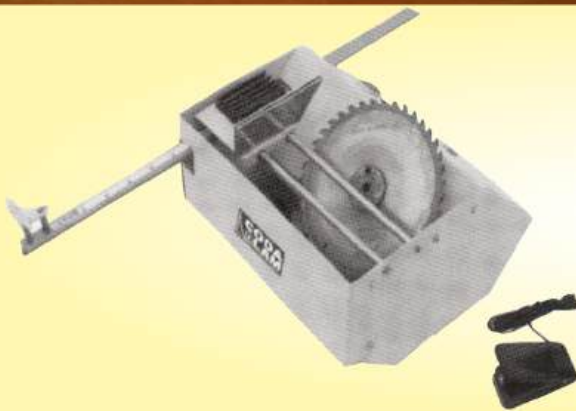
45° Pvc Beeding Cutter

45 Degree Pvc Beeding Cutter (auto) Is A Specialized Automated Machine Designed To Cut Pvc Beeding Or Profiles At A Precise 45-degree Angle. This Type Of Cutter Is Essential In Photo Industries Such As Photo & Poster Lamination, Where Pvc Beeding Is Commonly Used For Edging, Decorative Trims, And Joint Covers. Single Circular Blades Positioned To Make Simultaneous Cuts At A 45-degree Angle. High Speed Power Motor, Drives The Cutting Blades, Providing The Necessary Power To Cut Through Pvc Profiles Efficiently. The Motor's Power Is Matched To The Material Thickness And Type.



45° Aluminium Cutter

An Automatic 45 Degree Aluminum Cutter Is A Specialized Machine Designed To Cut Aluminum Profiles At A Precise 45-degree Angle. It Offers Precision, Efficiency, And Consistency In Cutting Operations. Cutting Aluminum Profiles For Window And Door Frames, Structural Components, And Led Photo Frames, Decorative Trims. Overall, A 45 Deg Aluminum Cutter (auto) Is An Invaluable Tool For Industries Requiring Precise Angled Cuts Of Aluminum Profiles, Providing Both Efficiency And Accuracy In High-volume Production Environments. Positioned To Make Simultaneous Cuts At A 45-degree Angle.



Size 12 Inch Roll To Sheet Cutter

Suitable For Cutting Reel Into Sheets. The Machine Is Fitted With Multiple Gear Wheels For Changing The Cutting Lengths. With Counting Meter And A Sensor For Auto-traveling Of Sheets To Slide Rotary Blade To Cut Manually.



Cutting Machines



**Mdf Board Cutter
Auto With Stand**

The 5-mdf Board Cutter Is A Manually Operated Heavy-duty Cutter Specially Designed For Cutting Mdf, Hardboards, Sunboard, And Foamboard With Ease And Accuracy. Its Strong Steel Construction Ensures Durability And Long-lasting Performance. Equipped With A Sharp Industrial-grade Cutting Blade, The Machine Guarantees Clean And Precise Cuts For Boards Up To 5 Mm Thickness. It Is Highly Suitable For Studios, Signage Shops, Furniture Workshops, And Photo Framing Industries, Where Reliable Cutting Performance Is Essential. Easy Manual Operation Ensures Smooth Handling And Consistent Results.

Round Cutter Manual

The Round Corner Cutter (manual) Is A Versatile And Easy-to-use Machine Designed For Precise Corner Cutting On A Variety Of Materials. Built With A Sturdy Body And Durable Blades, It Ensures Smooth And Accurate Cuts Without Damaging The Material. Available In 8mm, 10mm, And 12mm Cutting Sizes, This Cutter Is Perfect For Achieving Professional Rounded Edges On Documents, Id Cards, Packaging Materials, Book Covers, And More. Its Compact And Manual Operation Design Makes It Highly Reliable For Workshops, Offices, And Small To Medium Industries.



**Round Corner Cutter
Pnumatic Auto**

The Round Corner Cutter (auto) Is A High-precision Machine Designed To Deliver Smooth, Consistent, And Professional Rounded Corners With Minimal Effort. It Is Equipped With An Automated System That Reduces Manual Operation, Ensuring Higher Productivity With Less Power Consumption. Available In 8mm, 10mm, And 12mm Cutting Sizes, This Machine Is Suitable For Bulk Cutting Needs In Industries Like Printing, Bookbinding, Id Card Making, And Packaging.



**Round Corner Cutter
Pnumatic Auto**

The Round Corner Cutter (auto) Is A Precision-engineered Automatic Machine Designed For Cutting Smooth And Accurate Round Corners On Paper, Cards, Pvc Sheets, And Other Similar Materials. Equipped With An Automatic Feeding And Cutting Mechanism, It Ensures High Productivity With Minimal Manual Effort. The Machine Operates With Less Power Consumption While Maintaining Exceptional Accuracy And Consistency. Its Robust Construction And User-friendly Controls Make It An Ideal Choice



Cutting Machines



ID Card Die Cutter

The ID Card Die Cutter Is A Specialized Machine Designed For Precisely Cutting Pvc, Pet, And Laminated Sheets Into Standard Id Card Sizes. Built With A Durable Steel Body And Sharp Die Mechanism, This Cutter Ensures Clean, Smooth Edges Without Cracks Or Rough Finishes. Depending On The Model, It Can Be Operated Manually With A Lever System Or Through An Automatic Power-driven System For Higher Production Needs. This Machine Is Widely Used In Printing Presses, Lamination Units, Corporate Id Card Manufacturers, Schools, And Government Card Production Centers. Its Ergonomic Design Reduces Operator Fatigue And Delivers Consistent Results Even During Continuous Operations.

A4 Size Paper Cutter

The A4 Size Paper Cutter Is A Compact Yet Powerful Machine Designed For Precise Cutting Of A4 Sheets With Minimal Effort. Ideal For Offices, Schools, Print Shops, And Photo Studios, This Cutter Ensures Clean And Accurate Cuts Every Time. Equipped With A Sturdy Blade System And A Robust Steel Frame, It Can Easily Handle Stacks Of Paper, Photo Sheets, Or Laminated Documents. Depending On The Model, It Is Available In Manual Lever Operation For Light Use Or Semi-automatic Models For Medium To Heavy-duty Cutting Needs.



Size 20 Inch

Album Cutter with Stand Manual

The 20 Inch Album Cutter With Stand Is A Professional-grade Cutting Machine Designed For Precise Cutting Of Photo Album Sheets, Paper, And Board Materials. It Offers High Accuracy And Efficiency In Cutting, Making It Ideal For High-volume Production In Photo Studios, Printing Shops, And Binding Industries. This Machine Features A Robust Frame With A Stable Stand And A Heavy-duty Rotary Blade System, Capable Of Cutting Up To 500 Sheets At A Time. The High-quality Imported Stainless Steel (ss) Blade Ensures Sharpness And Longevity, While The Precise Alignment Mechanism Guarantees Consistent Cutting Accuracy.



PHOTO FRAME CUTTING & PINNING MACHINES



Pinning Machine Manual

The Pinning Machine (manual) Is A Heavy-duty And Reliable Equipment Designed For Efficient Pin Binding Operations. It Works On A Foot Pedal Mechanism, Allowing Smooth And Hassle-free Operation Without The Need For Electricity. The Machine Supports Multiple Pin Sizes (7mm, 10mm, And 15mm), Making It A Versatile Choice For Different Binding Requirements. Built With A Strong Frame And Durable Components, It Ensures Long-lasting Performance For Commercial And Industrial Applications.

Pinning Machine Auto

The Automatic Pinning Machine Is A High-performance, Heavy-duty Binding Solution Designed With A Pneumatic Control System For Smooth And Effortless Operation. Equipped With Air Pressure Adjustment, The Machine Ensures 100% Accuracy And Consistency In Pin Binding. It Supports Pin Sizes Of 7mm, 10mm, And 15mm, Making It Suitable For A Wide Range Of Applications. Built With Robust Components, This Machine Delivers Speed, Precision, And Durability For Industrial-scale Binding Tasks.



V Frame Cutting Machine Manual

The Manual 45° V Cutter Is A Foot-operated Frame Cutting Machine Designed For Precise And Smooth Cutting Of Materials At A Perfect 45° Angle. Built With A Robust Frame And Sharp Cutting Blade, It Ensures Accuracy And Durability For Heavy-duty Use. The Vertical Slider With Adjustable Stopper Allows Easy Customization Of Cutting Depth And Size.

This Cutter Is User-friendly, Reliable, And Ideal For Professional Applications Such As Photo Album Making, Framing, And Other Precision Cutting Tasks.

45° Circular Cutter Auto

The Automatic 45° Circular Cutter Is A Precision-engineered Machine Designed For High-accuracy Angular Cutting. Built With A Durable Ms Body And Powered By A ½ Hp Motor, It Delivers Consistent And Smooth Performance. Equipped With A 24" X 24" Table, Scaling System, And Motorized Operation, It Is Suitable For Professional Applications Requiring Precise 45° Circular Cuts. Its Sturdy Build And Automated Features Make It Reliable For Continuous, Heavy-duty Use.



PHOTO FRAME CUTTING & PINNING MACHINES



45° Circular Cutter Auto

The Automatic 45° Cutter Is A Heavy-duty Machine Built For Precise Angular Cutting Across All Sizes. Made From High-strength Ms Material And Equipped With A ½ Hp Motor, It Ensures Durability And Consistent Cutting Performance. With Its 24" X 24" Table Size, Scaling System, And Motorized Operation, This Machine Is Ideal For Industries Requiring Accuracy, Speed, And Reliability In 45° Cutting Tasks.

45° Double Circular Cutter Auto

The 45° Double Saw Blade Cutter (auto) Is A High-precision, Fully Automated Cutting Solution Designed For Efficient And Accurate Angular Cuts. Equipped With Dual Circular Saw Blades, It Enables Simultaneous 45° Cutting, Making It Ideal For Applications Such As Miter Joints, Photo Frames, Woodworking, And Plastic Fabrication. Its Motorized System Ensures Smooth Operation, While Emergency Stop Buttons Provide Enhanced Safety. Built For Industrial Use, It Guarantees Speed, Consistency, And Long-term Durability.



45° Board Buffing Machine

The Board Buffing Machine (auto) Is A Fully Automatic Solution Designed For Buffing And Polishing The Surfaces Of Boards With High Precision And Consistency. Equipped With Rotating Buffing Wheels And An Automated Feeding System, It Applies Polishing Compounds Evenly To Deliver A Smooth, Glossy Finish. This Machine Is Ideal For Woodworking, Furniture, And Board Finishing Industries, Ensuring Uniform Surface Quality, Efficiency, And Reduced Manual Effort.



COLD & HOT GLUEING MACHINE



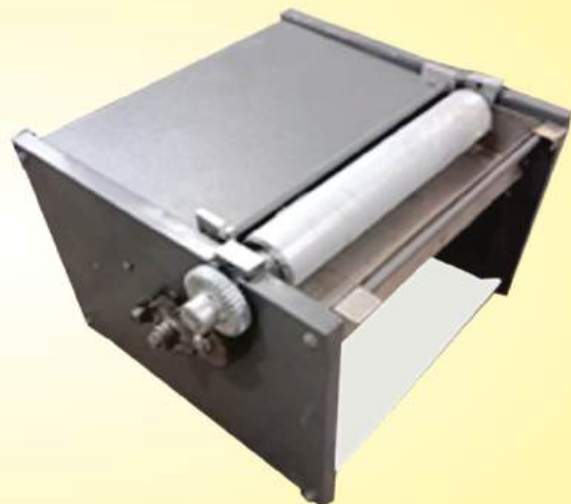
Size 20 Inch

Hot Melt Glueing Machine Auto

The Hot Glueing Machine Is A Heavy-duty System With A Strong Frame Structure, Designed For Hot Melt Adhesive Applications. It Comes With A Heated Tank, Heated Rollers, And A Dc Drive With A Variable Speed Control System. Manual Pressure Adjustment Ensures Compatibility With All Types Of Papers And Surfaces, Making It Reliable For Consistent And Precise Gluing.

Size 15 Inch
Cold Glueing Machine

The 15 Inch Cold Glueing Machine Is A Precise And Efficient Tool Designed For Applying Cold Glue To Photo Albums, Paper Boards, And Other Materials. It Ensures Strong Adhesion Without Heat, Making It Ideal For Bookbinding, Album Production, And Packaging Applications. This Machine Operates With A Smooth Feeding And Glue Application System, Allowing Consistent And Uniform Glue Distribution. Its Robust Construction Ensures Durability And Stable Performance During Continuous Use.



COLD & HOT GLUEING MACHINE



**Size 32 Inch
Cold Glueing Auto With Folding &
Pasting Press Machine**
A 32 Inch Cold Glueing Auto With
Folding & Pasting Press Machine Is A
Fully Automatic Industrial Machine Used
Mainly In Corrugated Carton And Box
Manufacturing. It Is Designed To Apply
Cold Adhesive, Fold Carton Flaps, And
Press/paste Them Tightly To Form
Strong, Finished Boxes. This Machine
Automatically Feeds Flat Box Blanks,
Applies Cold Glue Accurately, Folds The
Glued Flaps, And Presses Them
Together To Form A Strong Seam. It Is
Ideal For High-speed Production,
Consistent Quality, And Reduced Manual
Labor In Packaging Operations.

**Size 32 Inch
Cold Glueing Machine Auto**
The 32 Inch Cold Glueing Machine Is A Precise And
Efficient Tool Designed For Applying Cold Glue To Photo
Albums, Paper Boards, And Other Materials. It Ensures
Strong Adhesion Without Heat, Making It Ideal For
Bookbinding, Album Production, And Packaging
Applications. This Machine Operates With A Smooth
Feeding And Glue Application System, Allowing Consistent
And Uniform Glue Distribution. Its Robust Construction
Ensures Durability And Stable Performance During
Continuous Use.



GROOVING MACHINE



Size 20 Inch

V Grooving Machine Manual

A V Grooving Machine Is A Specialized Piece Of Equipment Used Primarily In Metalworking And Woodworking To Create Precise V-shaped Grooves In A Variety Of Materials. These Grooves Can Be Used For Decorative Purposes, As Part Of A Manufacturing Process, Or To Facilitate Bending And Folding Of The Material Along The Grooved Line. Most V-grooving Machines Allow For Adjustment Of The Depth And Angle Of The Groove, Providing Versatility For Different Applications And Material Thicknesses. These Machines Are Designed To Produce Highly Accurate And Consistent Grooves.



Size 20 Inch

V Grooving Machine Auto

An Automatic Card Box Grooving Machine Is A Specialized Piece Of Equipment Designed For Creating Precise Grooves In Cardboard Or Similar Materials Used In The Production Of Card Boxes, Packaging, And Other Paperboard Products. This Machine Is Essential In The Packaging Industry For Ensuring That Card Boxes Can Be Easily Folded And Assembled.



+91-9873184816, 9873684816

Visit us

www.fotolaminate.com



fotolaminate

Thank
you

Contact



OFFICE ADDRESS : SHOP NO. 3, SUMAN MARKET, 1st FLOOR,
ESPLANADE ROAD, CHANDNI CHOWK DELHI PIN – 110006.



WORKSHOP ADDRESS : KH. NO.87-570/2 MAIDAN GARHI NEAR
IGNOU UNIVERSITY, SOUTH DELHI PIN – 110068.



+91-9873184816, 9873684816



codalam@yahoo.co.in